

BasinPak™

Access Data at a Regional Scale

Access Data at a Regional Scale

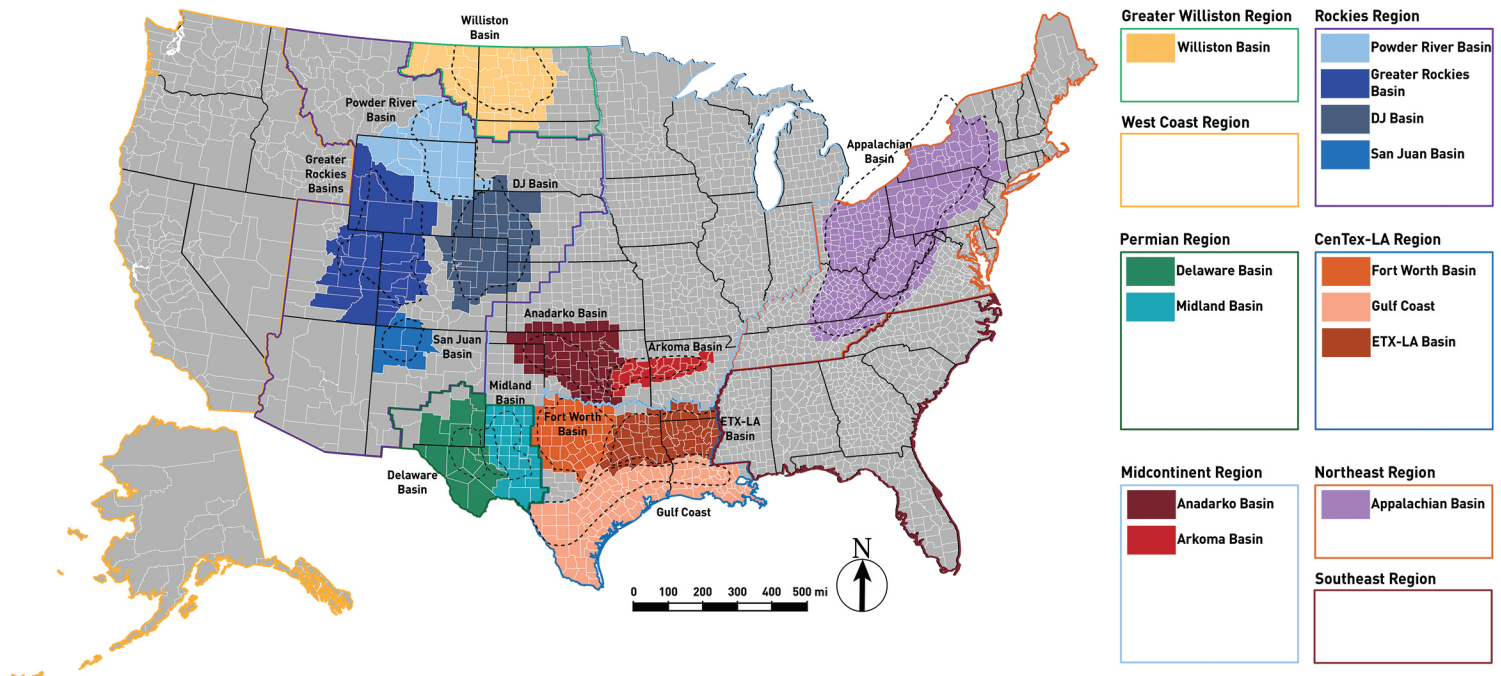
BasinPak Membership allows users access to available data in a given region for a subscription fee. Subscription tier options are offered at variable time scales to meet your company's data consumption needs.

- ▬ Individual or multiple basin subscriptions (Midland, Williston, Anadarko BasinPak)
- ▬ Individual or numerous regional subscriptions (Permian or Rockies Region BasinPak)
- ▬ Subscribing to all regions (All BasinPak)

**Subscription cost is calculated from the value of the current data aggregated in each BasinPak boundary. Users will be entitled to all Premier Corex Sample Library/TTU/Repository data generated by Premier Corex or DataStak data released in the subscription area within the active subscription period.*

**BasinPak boundaries, extent, and regional category are subject to change.*

*** Visit datastak.pofg.com for current BasinPak information.*



Powered by: **DataStak™** & **PREMIER COREX**
The Rock Sample Search Engine



Visit us online at www.pofg.com/datastak

BasinPak+™

Petrophysical Insight



The catalyst for geologic and petrophysical insight for asset investigation

- Subscribers receive monthly updated regional property maps including mineralogy, brittleness index, organic content, maturity, saturations, etc.
- Subscribers also receive extracted properties at every horizontal well for screening production performance based on geological conditions using tools like SpotFire and Power BI.
- Petrophysical model integrates laboratory rock analysis from the Premier Sample Library database for the most accurate commercial geologic interpretation available.
- Modeled log and rock sample data is meticulously quality controlled, depth matched, and conditioned to improve geologic consistency and prediction accuracy.
- Users can tie subsurface reservoir conditions, rock properties and historical production data for finding overlooked acreage, target risk assessment and making capital allocation decisions.
- Aggregated products are georeferenced using ESRI ArcGIS Pro and easily import to software like (Petrel, Decision Space, Kingdom Suite, Geographix, Petra, ArcGIS, etc.)
- Interrogate both geologic properties and completion parameters driving production performance across your acreage.

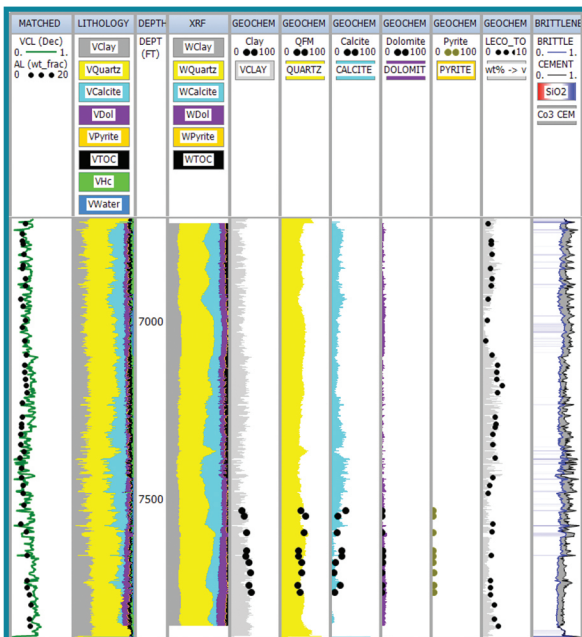


Figure 1: QC Plot

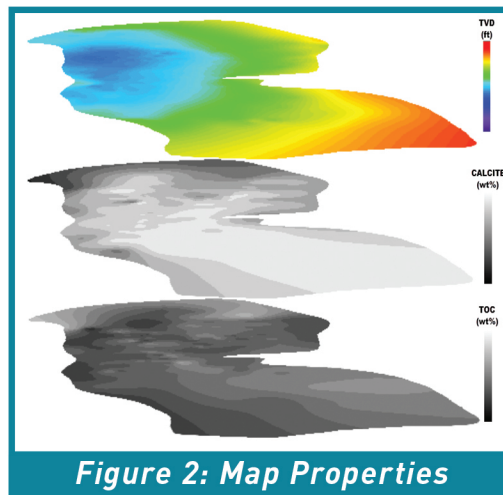


Figure 2: Map Properties

Contact us:

Bryan Guzman
 Director Global Business
 Development & Technology
 M: 832-503-4645
 E: bryan.guzman@pofg.com

Derek Buster
 President
 ProdiGeology, Inc.
 O: 682-888-7849
 E: info@prodiGeology.com

Powered by:  **PRODIGEOLOGY** &  **PREMIER COREX** SAMPLE LIBRARY